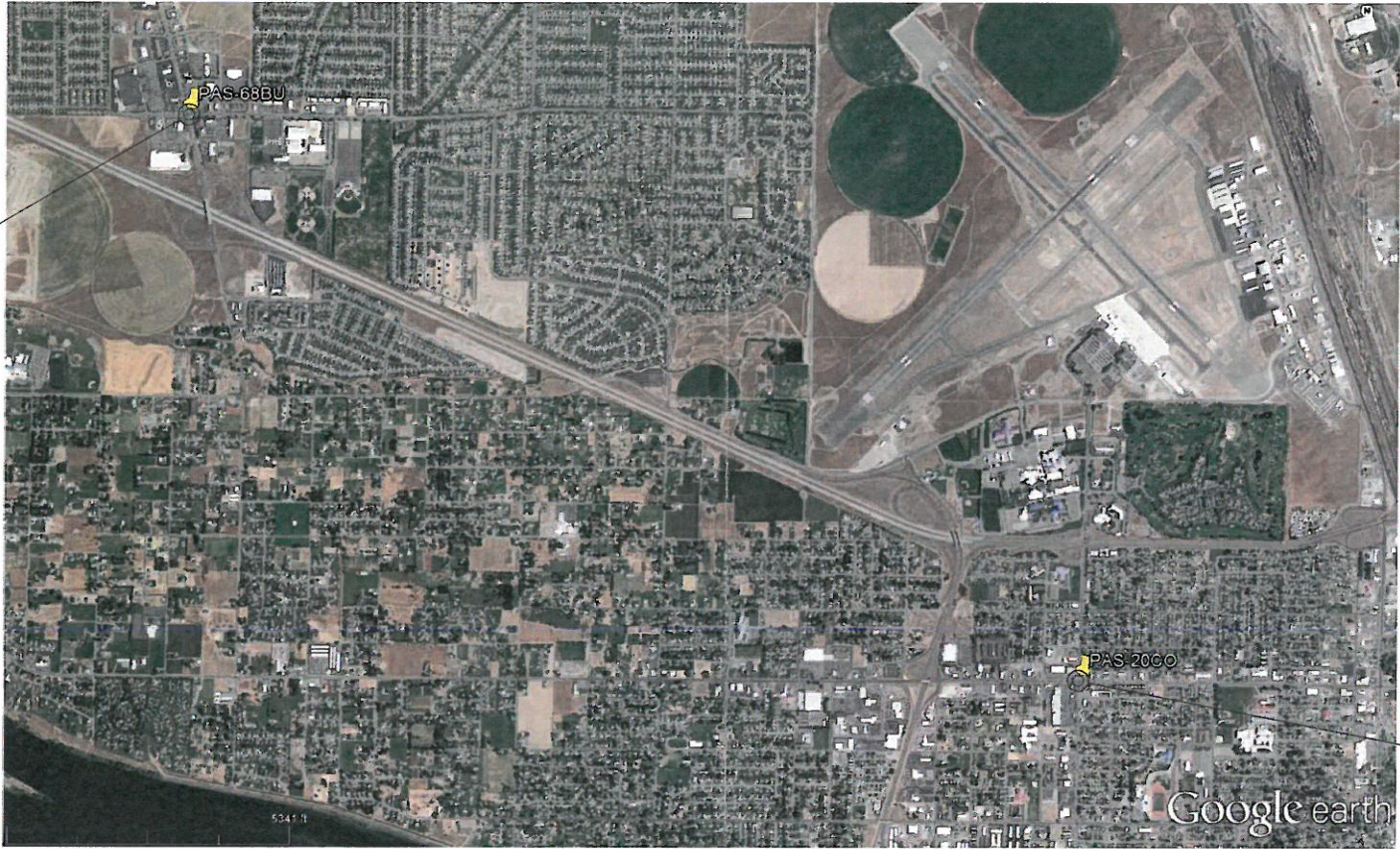


DRAWING INDEX	
NO.	DESCRIPTION
101	TITLE -- SITE LOCATION(S)
102	DETAIL(S)
103	N 20TH AVE & W COURT ST
104	N RD 68 & BURDEN BLVD

N RD 68 & BURDEN BLVD  
(NORTH & SOUTHBOUND)



N 20TH AVE & W COURT ST  
(SOUTH & WESTBOUND)

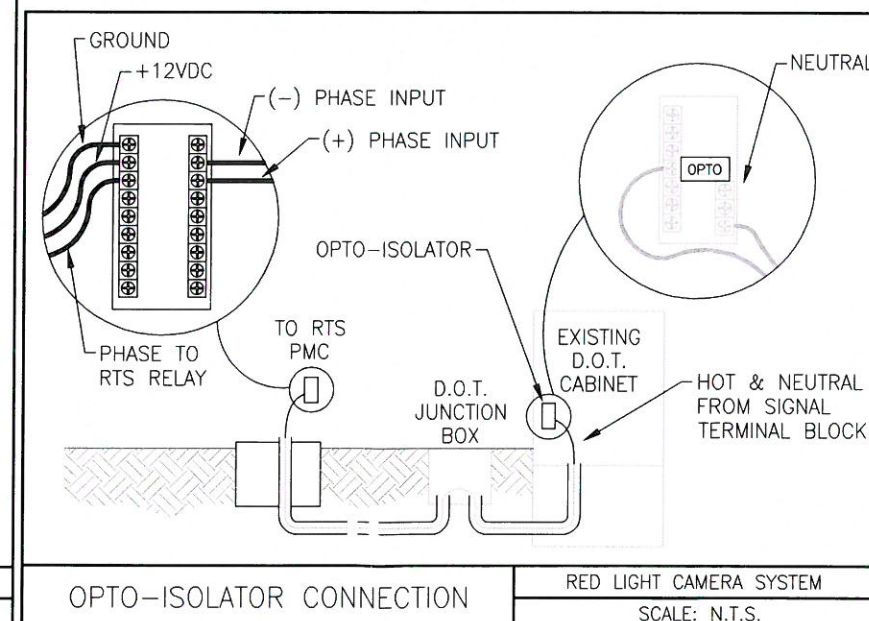
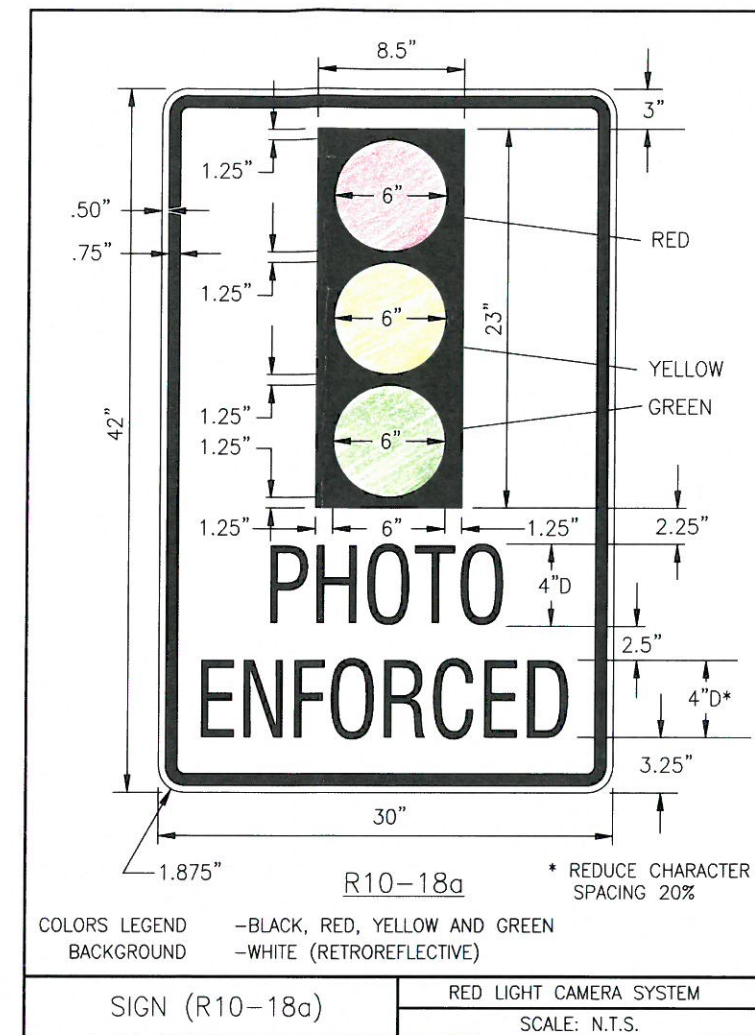
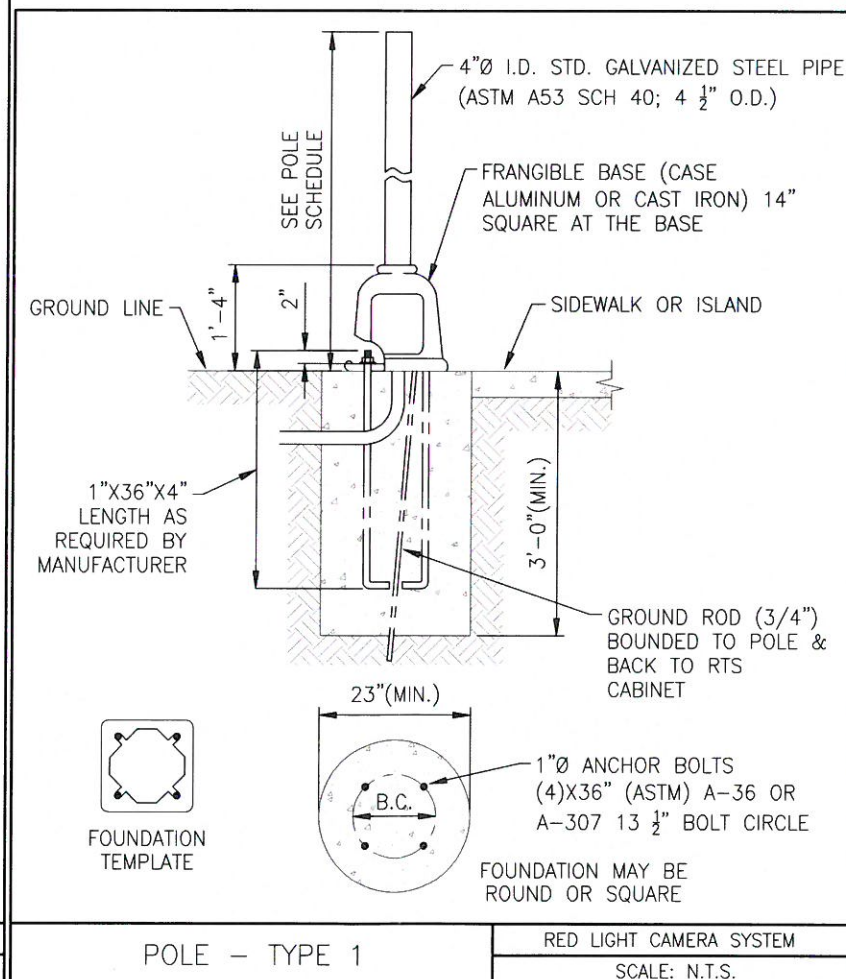
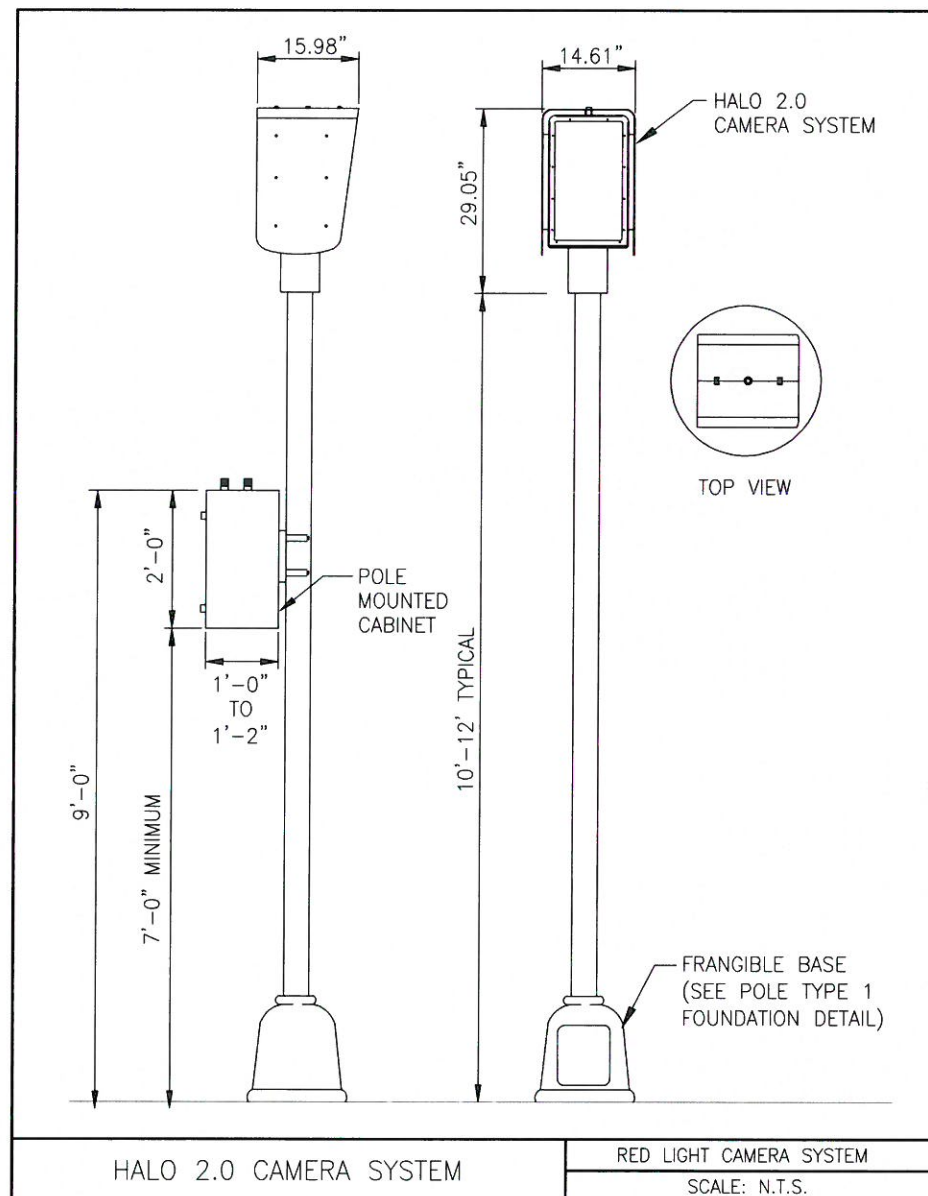
GENERAL NOTES:

1. ALL TRAFFIC SIGNAL EQUIPMENT AND ALL CONSTRUCTION IN PUBLIC RIGHT-OF-WAY OR IN EASEMENTS GRANTED FOR PUBLIC USE SHALL CONFORM TO THE STATES DEPARTMENT OF TRANSPORTATION (D.O.T.) STANDARD DRAWINGS AND SPECIFICATIONS, THE CITY POLICY MANUALS AND THE CITY TRAFFIC SIGNAL SPECIAL REQUIREMENTS.
2. TRAFFIC CONTROL SHALL CONFORM TO THE CITY "TRAFFIC CONTROL MANUAL" AND/OR AS DIRECTED BY THE CITY PUBLIC WORKS INSPECTOR.
3. UTILITY LOCATIONS SHOWN ARE BASED UPON THE BEST AVAILABLE INFORMATION. THE CONTRACTOR SHALL CONTACT THE UTILITY LOCATING COMPANY BEFORE CONSTRUCTION AND VERIFY ACTUAL UTILITY LOCATIONS.
4. ALL EQUIPMENT MUST BE LOCATED WITHIN THE RIGHT-OF-WAY.
5. ALL EXISTING UTILITIES SHOWN WITHIN THE PLANS ARE PROVIDED BY THE BEST AVAILABLE INFORMATION PROVIDED BY COOPERATING UTILITY COMPANIES. NEITHER REDFLEX, THE CITY NOR THE STATE D.O.T. ASSUME RESPONSIBILITY AS TO THE PRECISE LOCATION OR ACCURACY OF SHOWN UTILITIES. THE CONTRACTOR SHALL PROPERLY FIELD VERIFY UTILITY LOCATIONS AND SHALL PROPERLY PROTECT, MAINTAIN AND/OR REPAIR ANY DAMAGE OF ALL KNOWN AND ANY EXPOSED UNKNOWN UTILITIES SHOWN WITHIN THE PLANS. REDFLEX, THE CITY AND THE STATE D.O.T. ASSUME NO LIABILITY RESULTING IN POSSIBLE DEFICIENCIES IN UTILITY LOCATIONS AND NO REMEDIAL OR ADDITIONAL COMPENSATION WILL BE ALLOWED.
6. PROTECT IN PLACE ALL CITY SIGNAL EQUIPMENT AND LOOPS. ANY EQUIPMENT OR LOOPS DAMAGED AS A RESULT OF THIS INSTALLATION WILL BE RESTORED AT THE COST OF THE CONTRACTOR.

*If conditions are found to be diff. than noted on these plans the contractor must immediately notify the City.*

<div><div>SPECIFICATIONS</div><div>THE DEPARTMENT OF TRANSPORTATION "STANDARD SPECIFICATIONS FOR HIGHWAY CONSTRUCTION" AND ALL SUPPLEMENTS THERE TO, SHALL GOVERN.</div></div>	<div><div>Redflex</div><div>5651 W. TALAVI BLVD., #200 GLENDALE, AZ 85036</div><div>WEBSITE: REDFLEX.COM   PHONE: 623-207-2000</div></div>	NO.	DATE	INITIAL	REVISION DESCRIPTION	DRAWN BY (REDFLEX):	DESIGNED BY (REDFLEX):	REDLIGHT PHOTO ENFORCEMENT	RTS DRAWING NO.		
		1	190116	JL	INITIAL RELEASE	J.LORD	C.RENZI			PASCO, WA	PAS -101
						APPROVED BY:		TITLE - SITE LOCATIONS	SIZE D	SHEET NO. - OF -	
						PUBLIC WORKS DIRECTOR/CITY ENGINEER & DATE					
						RECOMMENDED BY:					
						DEPUTY CITY ENGINEER/DEVELOPMENT SERVICES & DATE					

*Contractor Responsible for acquiring all required permits. 48 hr notice for all inspections by C.O.P. Contractor responsible for scheduling all other required inspections.*



NOT TO SCALE

In Washington, it is called Standard Specifications for Road, Bridge, and Municipal Construction

DRAWING INDEX	
NO.	DESCRIPTION
101	TITLE -- SITE LOCATION(S)
102	DETAIL(S)
103	N 20TH AVE & W COURT ST
104	N RD 68 & BURDEN BLVD


N RD 68 & BURDEN BLVD  
(NORTH & SOUTHBOUND)

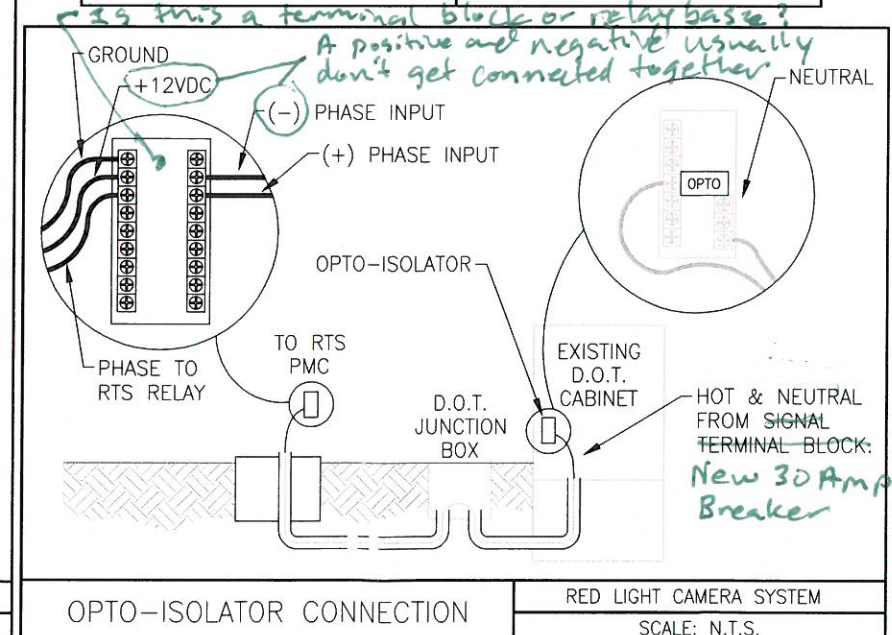
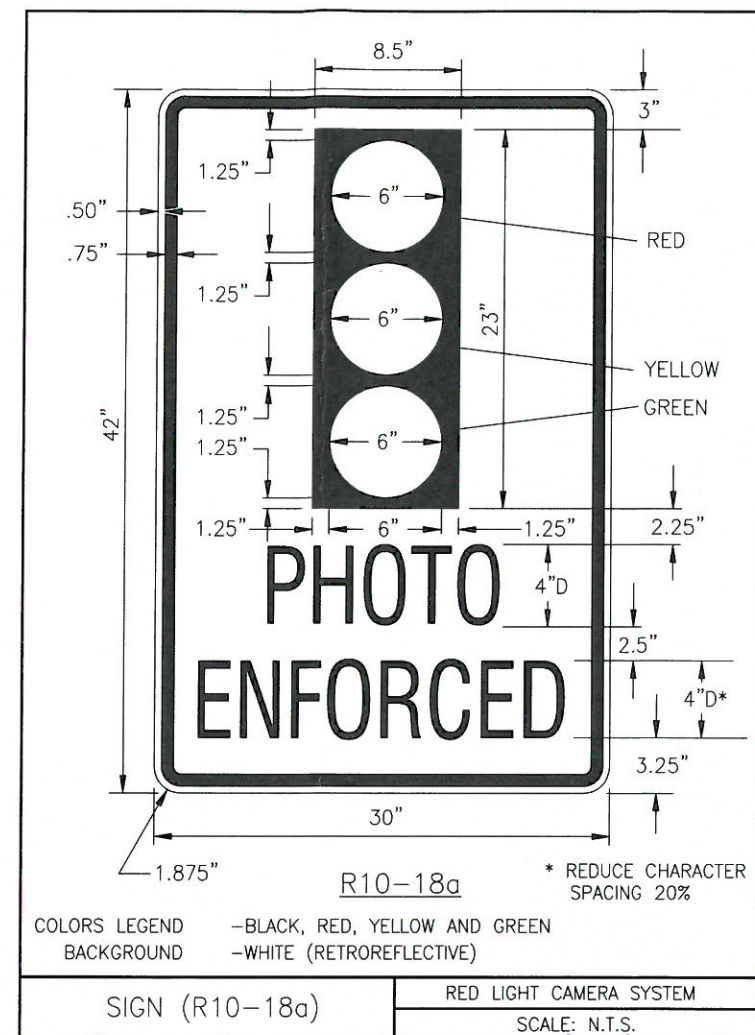
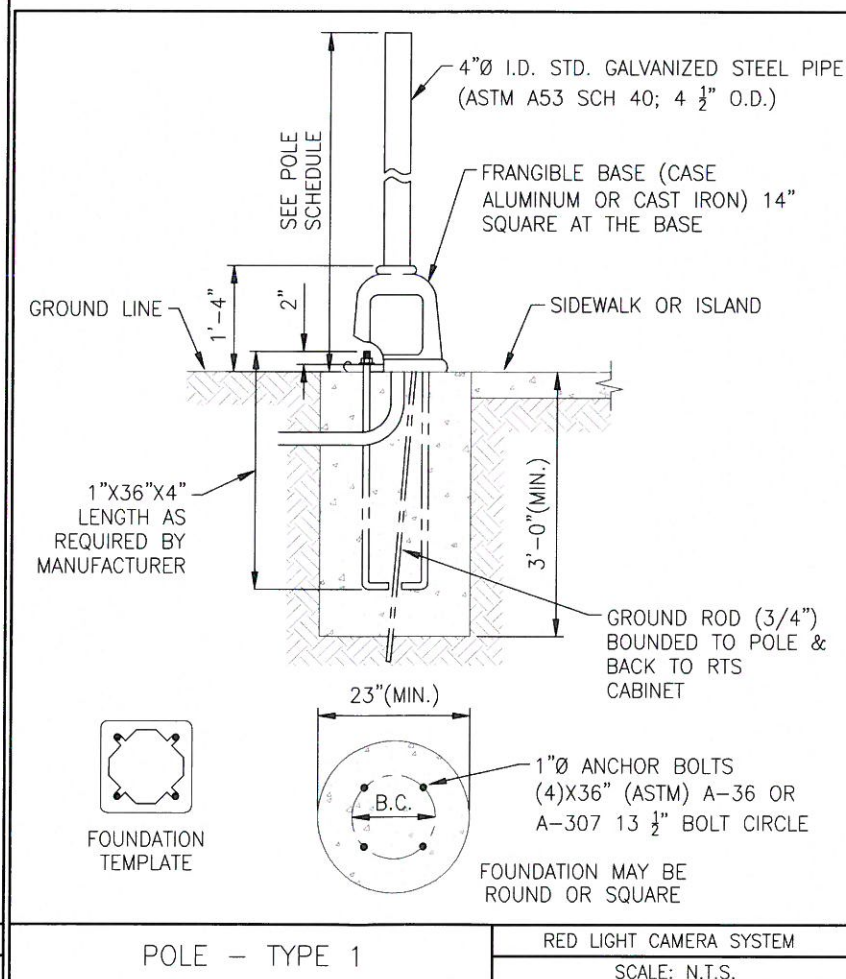
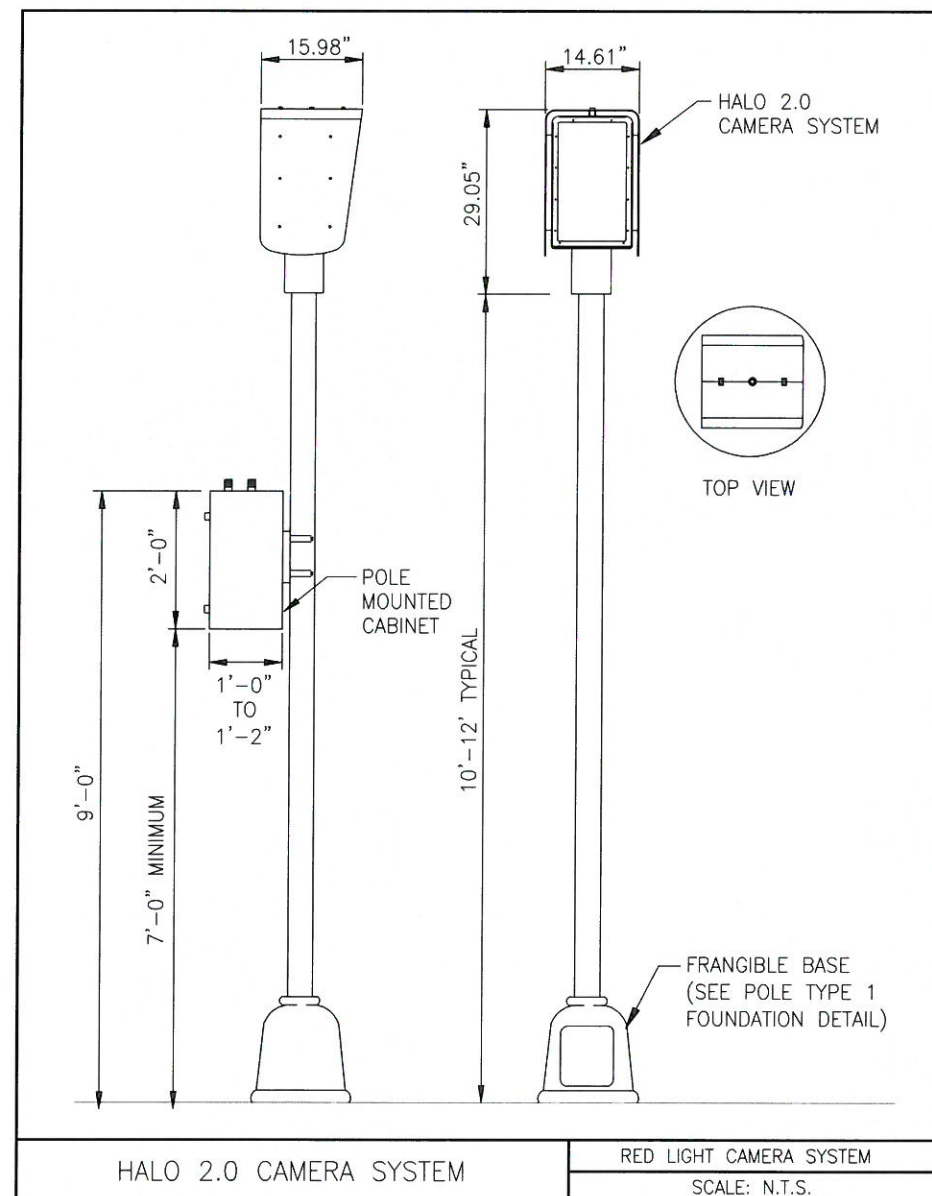


N 20TH AVE & W COURT ST  
(SOUTH & WESTBOUND)

GENERAL NOTES:

- Washington State  
WSDOT
- of Pasco standards
- ALL TRAFFIC SIGNAL EQUIPMENT AND ALL CONSTRUCTION IN PUBLIC RIGHT-OF-WAY OR IN EASEMENTS GRANTED FOR PUBLIC USE SHALL CONFORM TO THE ~~STATES~~ DEPARTMENT OF TRANSPORTATION (~~D.O.T.~~) STANDARD DRAWINGS AND SPECIFICATIONS, ~~THE CITY POLICY MANUALS~~ AND THE CITY TRAFFIC SIGNAL SPECIAL REQUIREMENTS.
  - TRAFFIC CONTROL SHALL CONFORM TO THE CITY "TRAFFIC CONTROL MANUAL" AND/OR AS DIRECTED BY THE CITY PUBLIC WORKS INSPECTOR.
  - UTILITY LOCATIONS SHOWN ARE BASED UPON THE BEST AVAILABLE INFORMATION. THE CONTRACTOR SHALL CONTACT THE UTILITY LOCATING COMPANY BEFORE CONSTRUCTION AND VERIFY ACTUAL UTILITY LOCATIONS.
  - ALL EQUIPMENT MUST BE LOCATED WITHIN THE RIGHT-OF-WAY.
  - ALL EXISTING UTILITIES SHOWN WITHIN THE PLANS ARE PROVIDED BY THE BEST AVAILABLE INFORMATION PROVIDED BY COOPERATING UTILITY COMPANIES. NEITHER REDFLEX, THE CITY NOR THE STATE D.O.T. ASSUME RESPONSIBILITY AS TO THE PRECISE LOCATION OR ACCURACY OF SHOWN UTILITIES. THE CONTRACTOR SHALL PROPERLY FIELD VERIFY UTILITY LOCATIONS AND SHALL PROPERLY PROTECT, MAINTAIN AND/OR REPAIR ANY DAMAGE OF ALL KNOWN AND ANY EXPOSED UNKNOWN UTILITIES SHOWN WITHIN THE PLANS. REDFLEX, THE CITY AND THE STATE D.O.T. ASSUME NO LIABILITY RESULTING IN POSSIBLE DEFICIENCIES IN UTILITY LOCATIONS AND NO REMEDIAL OR ADDITIONAL COMPENSATION WILL BE ALLOWED.
  - PROTECT IN PLACE ALL CITY SIGNAL EQUIPMENT AND LOOPS. ANY EQUIPMENT OR LOOPS DAMAGED AS A RESULT OF THIS INSTALLATION WILL BE RESTORED AT THE COST OF THE CONTRACTOR.

SPECIFICATIONS THE DEPARTMENT OF TRANSPORTATION "STANDARD SPECIFICATIONS FOR HIGHWAY CONSTRUCTION" AND ALL SUPPLEMENTS THERE TO, SHALL GOVERN.	 5651 W. TALAVI BLVD., #200 GLENDALE, AZ 85036 WEBSITE: REDFLEX.COM   PHONE: 623-207-2000	NO.	DATE	INITIAL	REVISION DESCRIPTION	DRAWN BY (REDFLEX):	DESIGNED BY (REDFLEX):	REDLIGHT PHOTO ENFORCEMENT <b>PASCO, WA</b> TITLE - SITE LOCATIONS	RTS DRAWING NO.
		1	190116	JL	INITIAL RELEASE	J.LORD	C.RENZI		PAS -101
						APPROVED BY:		D	- OF -
						PUBLIC WORKS DIRECTOR/CITY ENGINEER & DATE			
						RECOMMENDED BY:			
						DEPUTY CITY ENGINEER/DEVELOPMENT SERVICES & DATE			



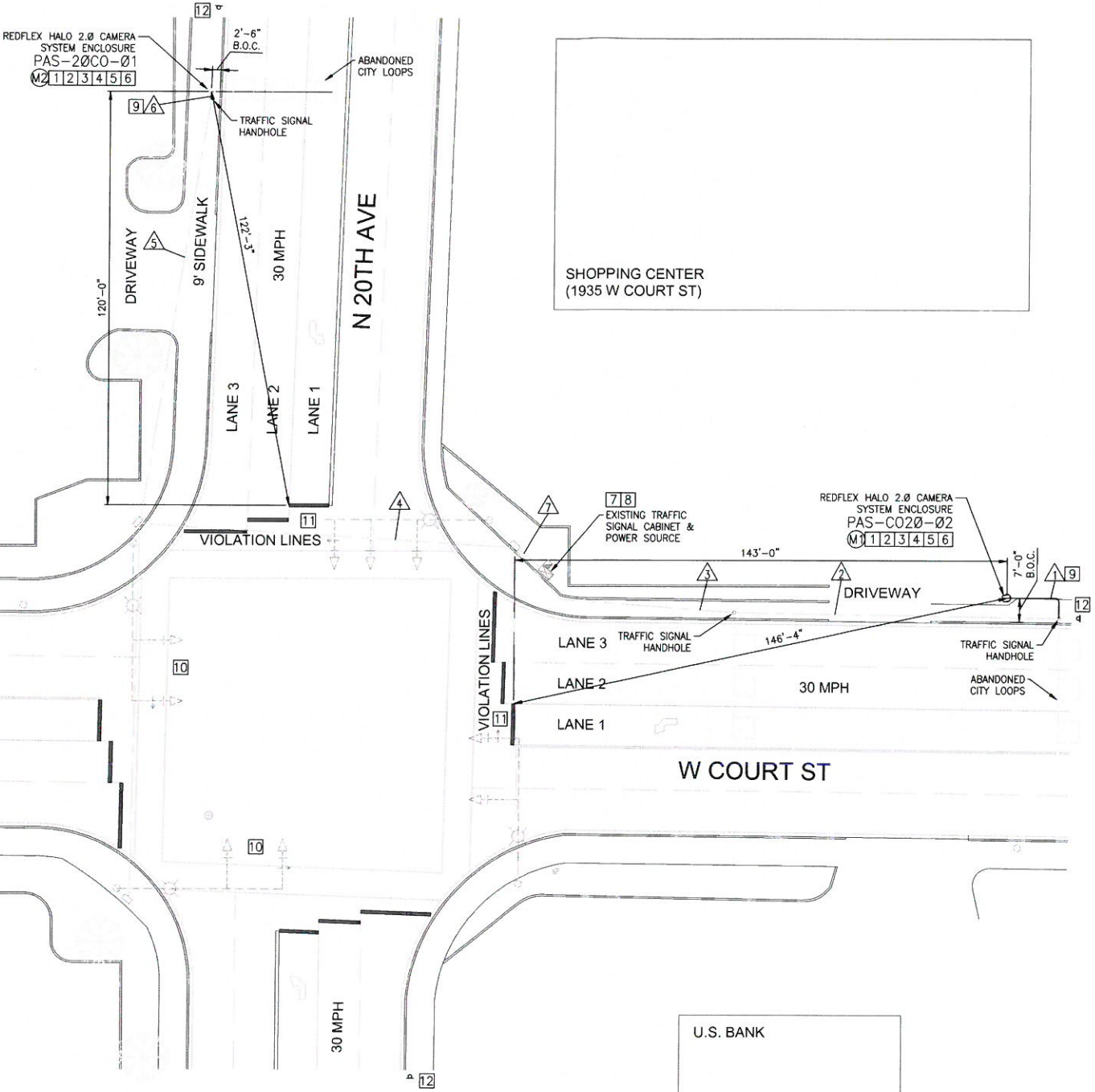
CONSTRUCTION NOTES

- 1 THIS IS A POLE MOUNTED CABINET SYSTEM. ALL CONDUCTOR CONNECTIONS TO BE MADE WITHIN THE POLE MOUNTED CABINET FOR EACH APPROACH. POLE MOUNTED CABINET TO BE INSTALLED AWAY FROM PEDESTRIAN TRAFFIC AND AT A MINIMUM HEIGHT FROM GRADE TO BOTTOM OF POLE MOUNTED CABINET SHALL BE 7 FEET IF LOCATED IN A SIDEWALK AND/OR NEAR A DRIVEWAY/EXIT, TO AVOID ANY LINE OF SIGHT ISSUES FOR MOTORISTS. SEE POLE DETAILS.
- 2 INSTALL FOUNDATION, POLE AND GROUND FOR REDFLEX EQUIPMENT. SEE DRAWING FOR LOCATION. SEE POLE DETAIL.
- 3 INSTALL CAMERA ENCLOSURE ON REDFLEX POLE; AIM AT MONITORED APPROACHES.
- 4 CONNECT POLE TO STRANDED BOND GROUND AND GROUNDING ROD IN POLE FOUNDATION AND TO SYSTEM GROUND BONDED BACK AT THE REDFLEX ENCLOSURE. CONTRACTOR SHALL PERFORM THREE-POINT GROUND TEST AT EACH MAIN CABINET OR ENCLOSURE. GROUNDING SYSTEM MUST YIELD RESULTS BELOW 10 OHMS AND DOCUMENTATION FROM THE ELECTRICAL CONTRACTOR MUST BE PROVIDED TO REDFLEX. NO ADDITIVE IS TO BE PUT IN THE GROUND TO ARTIFICIALLY YIELD THE DESIRED RESULTS.
- 5 PULL ROPE TO BE RUN THROUGH ALL CONDUIT FROM THE REDFLEX ENCLOSURE TO ALL REDFLEX EQUIPMENT. ALL SPARE CONDUCTORS/WIRES SHALL TERMINATE AT THE JUNCTION BOXES, CAMERA ENCLOSURES AND CABINETS. SPARE WIRES SHALL BE TAPED AT THE END, CONTINUOUS IN LENGTH AND IDENTIFIABLE WITH PERMANENT IDENTIFICATION BAND AND TAGGED AS "RTS".
- 6 TERMINATE POLE TO REDFLEX POWER CIRCUIT, SEE CONDUCTOR SCHEDULE FOR DETAILS (HOT AND NEUTRAL).
- 7 INSTALL OPTO-ISOLATOR INSIDE TRAFFIC CABINET TO PROTECT EQUIPMENT. SEE CONDUCTOR SCHEDULE FOR APPROACHES. (NOTE: NOTIFY THE TRAFFIC OPERATIONS DEPARTMENT OF THE CITY 24 HOURS BEFORE CONNECTION).
- 8 CONTRACTOR SHALL TERMINATE ALL POWER CIRCUITS INTO REDFLEX ENCLOSURE FROM POLE MOUNTED CABINET. INSTALL 30 AMP BREAKER INTO EXISTING SERVICE
- 9 CONTRACTOR SHALL USE EXISTING CONDUIT WHERE AVAILABLE. NEW CONDUIT TO BE TRENCHED/BORED IN ROADWAY TO MIN. STANDARD COVER DEPTH REQUIRED BY THE CITY (24" MINIMUM).
- 10 VERIFY IF EXISTING SIGNAL HEADS HAVE LED'S INSTALLED. IF NOT, INSTALL RED AND AMBER GELCORE LED'S OF THE TYPE APPROVED BY THE CITY-VERIFY BEFORE INSTALLING. IF NEEDED, ADJUST REDFLEX CAMERA SO IT IS VISIBLE TO THE SIGNAL HEADS.
- 11 REFRESH STRIPING (VIOLATION LINE AND LANES ETC) AS NEEDED AT THE MONITORED APPROACHES.
- 12 PHOTO ENFORCEMENT WARNING SIGNS SHALL BE PLACED PER CITY SPECIFICATIONS PRIOR TO INTERSECTION IN ALL DIRECTIONS AND SHALL NOT BLOCK THE VIEW OF ANY REGULATORY, GUIDE OR WARNING SIGNS. SIGNS TO BE INSTALLED BY CITY ENGINEERING.

GENERAL NOTES

1. ALL EXISTING UTILITIES SHOWN WITHIN THE PLANS ARE PROVIDED BY THE BEST AVAILABLE INFORMATION PROVIDED BY COOPERATING UTILITY COMPANIES. NEITHER REDFLEX NOR THE CITY ASSUME RESPONSIBILITY AS TO THE PRECISE LOCATION OR ACCURACY OF SHOWN UTILITIES. THE CONTRACTOR SHALL PROPERLY FIELD VERIFY UTILITY LOCATIONS AND SHALL PROPERLY PROTECT, MAINTAIN AND/OR REPAIR ANY DAMAGE OF ALL KNOWN AND ANY EXPOSED UNKNOWN UTILITIES SHOWN WITHIN THE PLANS. REDFLEX AND THE CITY ASSUME NO LIABILITY RESULTING IN POSSIBLE DEFICIENCIES IN UTILITY LOCATIONS AND NO REMEDIAL OR ADDITIONAL COMPENSATION WILL BE ALLOWED.
2. ALL WORK SHALL CONFORM TO ALL NATIONAL BUILDING AND ELECTRICAL CODES EXCEPT WHEN THE STATE D.O.T. AND/OR THE CITY STANDARDS SUPERSEDE.
3. ALL SUBSTRUCTURES MUST BE LOCATED PRIOR TO CONSTRUCTION. THE CONTRACTOR SHALL AND MUST NOTIFY ALL UTILITY COMPANIES WITHIN A MINIMUM OF 48 HOURS PRIOR TO START OF WORK. REDFLEX WILL MEET WITH THE CONTRACTOR AND CITY OFFICIALS TO MARK THE EXACT LOCATION OF REDFLEX EQUIPMENT IF NECESSARY PRIOR TO CONSTRUCTION.
4. TRAFFIC FLOW SHALL BE MAINTAINED AT ALL TIMES. TEMPORARY SHUTDOWNS OR DISRUPTION MUST BE COORDINATED WITH THE CITY.

Is the main breaker large enough to support this?



CONDUCTORS		CONDUITS																TERMINATION	POLES					
SOURCE	AWG#	1	2	3	4	5	6	7	8	9	10	11	12	13	14	15	16		M1	M2				
POLE M1 PMC (COMMS)	CAT5E	SHIELD 4 PAIR	1	1	1	1	1	1										POLE M2 PMC	1	1				
TRAFFIC RED PHASE (5-7 MULTI-CABLE)	#14	RED (+) ORANGE (+)	1	1	1	1	1	1	2									REDFLEX PMC'S	1	1				
CITY/STATE POWER SOURCE (120V)	#8	BLACK WHITE (-)	2	2	2			2										POLE M1	2					
POLE M1 PMC (POWER)	#8	BLACK WHITE (-)	2	2	2	2	2	2										POLE M2	2	2				
STRANDED BOND	#8	GREEN	1					1										ALL REDFLEX EQUIPMENT	1	1				
TOTAL NEW CABLES			7	6	6	4	4	5	4									NOTE: 2(2") CONDUITS MAY BE SUBSTITUTED FOR THE 4"	7	5				
CONDUIT SIZE/POLE RISER (INCHES)			2	T	T	T	T	2	T										*	*	*	*	*	*
LENGTH (~ FEET)			21	95	72	109	124	3	9										REFER TO THE POLE SCHEDULE FOR ADDITIONAL POLE INFORMATION					
NEW/EXISTING			N	E	E	E	E	N	E															

\* = CONDUCTORS RUN WITHIN POLE | A = AERIAL RUN | T = TRAFFIC SIGNAL CONDUIT

LEGEND		POLE SCHEDULE			
		NO.	TYPE	HEIGHT	CONDITION
	REDFLEX HALO 2.0 ENCLOSURE	M1	REDFLEX, TYPE 1	10'	NEW
	REDFLEX PULL/JUNCTION BOX	M2	REDFLEX, TYPE 1	10'	NEW
ABBREVIATIONS					
	CAT5 = CATEGORY FIVE CABLE				
	DLC = DETECTOR LOOP CABLE (SHIELDED)				
	TSP = TWISTED SHIELDED PAIR				
	LED = LIGHT EMITTING DIODE				
	R/W = RIGHT OF WAY				
	PMC = POLE MOUNTED CABINET				
	STP = STANDARD TERMINATION PANEL				
	RTS = REDFLEX TRAFFIC SYSTEMS				
		RELAY SCHEDULE			
		NB	-		
		EB	-		
		SB	2		
		WB	2		

5651 W. TALAVI BLVD., #200 GLENDALE, AZ 85036  
WEBSITE: REDFLEX.COM | PHONE: 623-207-2000

NO.	DATE (MM/DD)	INITIAL	REVISION DESCRIPTION
01	10/11/10	JL	INITIAL RELEASE

DRAWN BY (REDFLEX): J.LORD      DESIGNED BY (REDFLEX): C.RENZI

APPROVED BY: \_\_\_\_\_

PUBLIC WORKS DIRECTOR/CITY ENGINEER & DATE: \_\_\_\_\_

RECOMMENDED BY: \_\_\_\_\_

DEPUTY CITY ENGINEER/DEVELOPMENT SERVICES & DATE: \_\_\_\_\_

REDLIGHT PHOTO ENFORCEMENT

PASCO, WA

N 20TH AVE & W COURT ST

RTS DRAWING NO.

PAS -103

SIZE SHEET NO.

D - OF -

- 1 THIS IS A POLE MOUNTED CABINET SYSTEM. ALL CONDUCTOR CONNECTIONS TO BE MADE WITHIN THE POLE MOUNTED CABINET FOR EACH APPROACH. POLE MOUNTED CABINET TO BE INSTALLED AWAY FROM PEDESTRIAN TRAFFIC AND AT A MINIMUM HEIGHT FROM GRADE TO BOTTOM OF POLE MOUNTED CABINET SHALL BE 7 FEET IF LOCATED IN A SIDEWALK AND/OR NEAR A DRIVEWAY/EXIT, TO AVOID ANY LINE OF SIGHT ISSUES FOR MOTORISTS. SEE POLE DETAILS.
- 2 INSTALL FOUNDATION, POLE AND GROUND FOR REDFLEX EQUIPMENT. SEE DRAWING FOR LOCATION. SEE POLE DETAIL.
- 3 INSTALL CAMERA ENCLOSURE ON REDFLEX POLE; AIM AT MONITORED APPROACHES.
- 4 CONNECT POLE TO STRANDED BOND GROUND AND GROUNDING ROD IN POLE FOUNDATION AND TO SYSTEM GROUND BONDED BACK AT THE REDFLEX ENCLOSURE. CONTRACTOR SHALL PERFORM THREE-POINT GROUND TEST AT EACH MAIN CABINET OR ENCLOSURE. GROUNDING SYSTEM MUST YIELD RESULTS BELOW 10 OHMS AND DOCUMENTATION FROM THE ELECTRICAL CONTRACTOR MUST BE PROVIDED TO REDFLEX. NO ADDITIVE IS TO BE PUT IN THE GROUND TO ARTIFICIALLY YIELD THE DESIRED RESULTS.
- 5 PULL ROPE TO BE RUN THROUGH ALL CONDUIT FROM THE REDFLEX ENCLOSURE TO ALL REDFLEX EQUIPMENT. ALL SPARE CONDUCTORS/WIRES SHALL TERMINATE AT THE JUNCTION BOXES, CAMERA ENCLOSURES AND CABINETS. SPARE WIRES SHALL BE TAPED AT THE END, CONTINUOUS IN LENGTH AND IDENTIFIABLE WITH PERMANENT IDENTIFICATION BAND AND TAGGED AS "RTS".
- 6 TERMINATE POLE TO REDFLEX POWER CIRCUIT, SEE CONDUCTOR SCHEDULE FOR DETAILS (HOT AND NEUTRAL).
- 7 INSTALL OPTO-ISOLATOR INSIDE TRAFFIC CABINET TO PROTECT EQUIPMENT. SEE CONDUCTOR SCHEDULE FOR APPROACHES. (NOTE: NOTIFY THE TRAFFIC OPERATIONS DEPARTMENT OF THE CITY 24 HOURS BEFORE CONNECTION).
- 8 CONTRACTOR SHALL TERMINATE ALL POWER CIRCUITS INTO REDFLEX ENCLOSURE FROM POLE MOUNTED CABINET. INSTALL 30 AMP BREAKER INTO EXISTING SERVICE INSTALLATION FOR 120V SUPPLY TO CAMERA ENCLOSURE.
- 9 CONTRACTOR SHALL USE EXISTING CONDUIT WHERE AVAILABLE. NEW CONDUIT TO BE TRENCHED/BORED IN ROADWAY TO MIN. STANDARD COVER DEPTH REQUIRED BY THE CITY (24" MINIMUM).
- 10 EXISTING SIGNAL HEADS HAVE LED'S INSTALLED. IF NEEDED, ADJUST REDFLEX CAMERA SO IT IS VISIBLE TO THE SIGNAL HEADS.
- 11 REFRESH STRIPING (VIOLATION LINE AND LANES ETC) AS NEEDED AT THE MONITORED APPROACHES.
- 12 PHOTO ENFORCEMENT WARNING SIGNS SHALL BE PLACED PER CITY SPECIFICATIONS PRIOR TO INTERSECTION IN ALL DIRECTIONS AND SHALL NOT BLOCK THE VIEW OF ANY REGULATORY, GUIDE OR WARNING SIGNS. SIGNS TO BE INSTALLED BY CITY ENGINEERING.

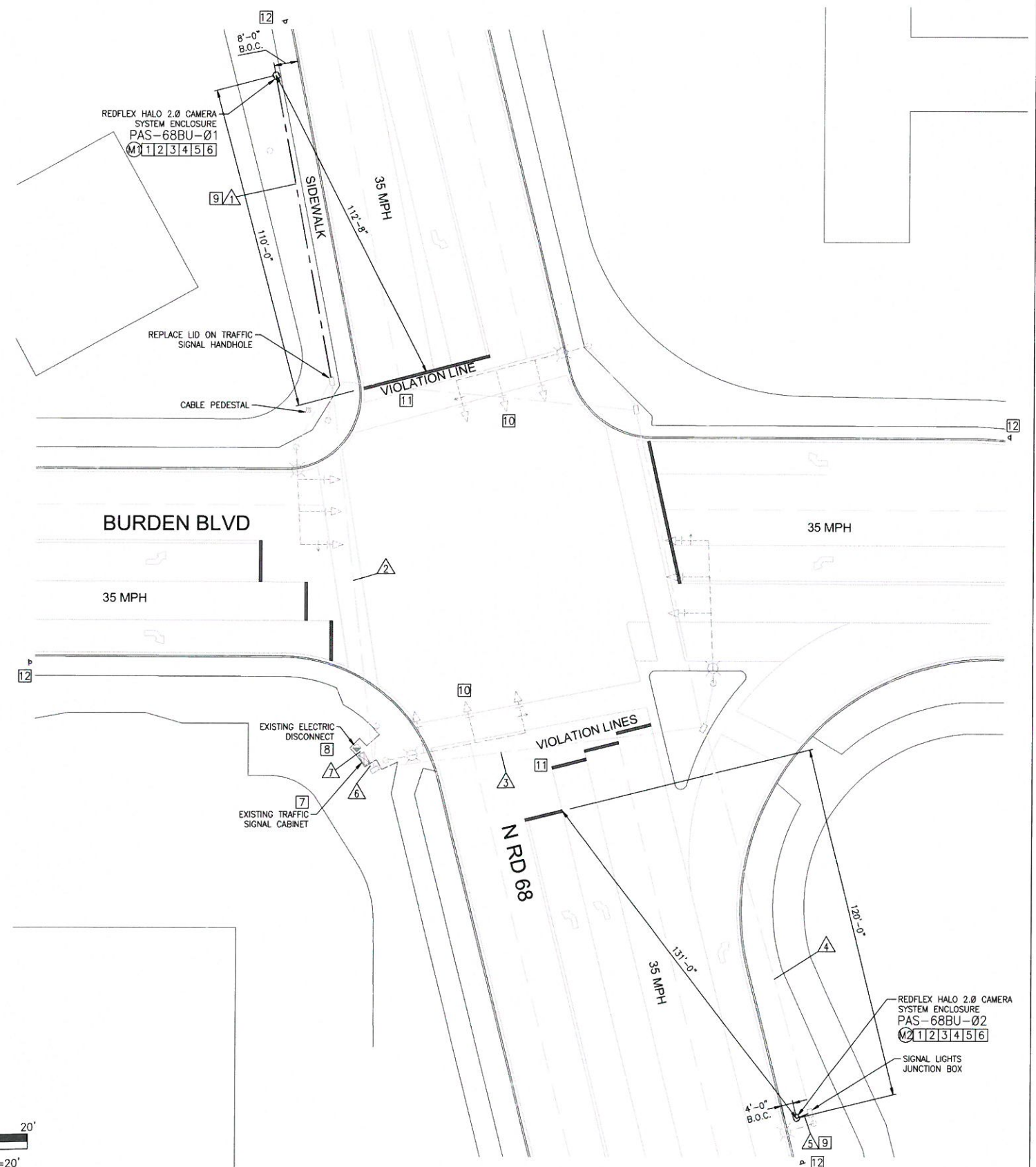
1. ALL EXISTING UTILITIES SHOWN WITHIN THE PLANS ARE PROVIDED BY THE BEST AVAILABLE INFORMATION PROVIDED BY COOPERATING UTILITY COMPANIES. NEITHER REDFLEX NOR THE CITY ASSUME RESPONSIBILITY AS TO THE PRECISE LOCATION OR ACCURACY OF SHOWN UTILITIES. THE CONTRACTOR SHALL PROPERLY FIELD VERIFY UTILITY LOCATIONS AND SHALL PROPERLY PROTECT, MAINTAIN AND/OR REPAIR ANY DAMAGE OF ALL KNOWN AND ANY EXPOSED UNKNOWN UTILITIES SHOWN WITHIN THE PLANS. REDFLEX AND THE CITY ASSUME NO LIABILITY RESULTING IN POSSIBLE DEFICIENCIES IN UTILITY LOCATIONS AND NO REMEDIAL OR ADDITIONAL COMPENSATION WILL BE ALLOWED.
2. ALL WORK SHALL CONFORM TO ALL NATIONAL BUILDING AND ELECTRICAL CODES EXCEPT WHEN THE STATE D.O.T. AND/OR THE CITY STANDARDS SUPERSEDE.
3. ALL SUBSTRUCTURES MUST BE LOCATED PRIOR TO CONSTRUCTION. THE CONTRACTOR SHALL AND MUST NOTIFY ALL UTILITY COMPANIES WITHIN A MINIMUM OF 48 HOURS PRIOR TO START OF WORK. REDFLEX WILL MEET WITH THE CONTRACTOR AND CITY OFFICIALS TO MARK THE EXACT LOCATION OF REDFLEX EQUIPMENT IF NECESSARY PRIOR TO CONSTRUCTION.
4. TRAFFIC FLOW SHALL BE MAINTAINED AT ALL TIMES. TEMPORARY SHUTDOWNS OR DISRUPTION MUST BE COORDINATED WITH THE CITY.

\* = CONDUCTORS RUN WITHIN POLE | A = AERIAL RUN | T = TRAFFIC SIGNAL CONDUIT

**Redflex**   
5651 W. TALAVI BLVD., #200 GLENDALE, AZ 85036  
WEBSITE: REDFLEX.COM | PHONE: 623-207-2000

DRAWN BY (REFLEX): J.LORD	DESIGNED BY (REFLEX): C.RENZI
APPROVED BY:	
PUBLIC WORKS DIRECTOR/CITY ENGINEER & DATE	
RECOMMENDED BY:	
DEPUTY CITY ENGINEER/DEVELOPMENT SERVICES & DATE	

RTS DRAWING NO.	
PAS -104	
SIZE	SHEET NO.
D	- OF -



Let State Electrical Code

CONSTRUCTION NOTES

- THIS IS A POLE MOUNTED CABINET SYSTEM. ALL CONDUCTOR CONNECTIONS TO BE MADE WITHIN THE POLE MOUNTED CABINET FOR EACH APPROACH. POLE MOUNTED CABINET TO BE INSTALLED AWAY FROM PEDESTRIAN TRAFFIC AND AT A MINIMUM HEIGHT FROM GRADE TO BOTTOM OF POLE MOUNTED CABINET SHALL BE 7 FEET IF LOCATED IN A SIDEWALK AND/OR NEAR A DRIVEWAY/EXIT, TO AVOID ANY LINE OF SIGHT ISSUES FOR MOTORISTS. SEE POLE DETAILS.
- INSTALL FOUNDATION, POLE AND GROUND FOR REDFLEX EQUIPMENT. SEE DRAWING FOR LOCATION. SEE POLE DETAIL.
- INSTALL CAMERA ENCLOSURE ON REDFLEX POLE; AIM AT MONITORED APPROACHES.
- CONNECT POLE TO STRANDED BOND GROUND AND GROUNDING ROD IN POLE FOUNDATION AND TO SYSTEM GROUND BONDED BACK AT THE REDFLEX ENCLOSURE. CONTRACTOR SHALL PERFORM THREE-POINT GROUND TEST AT EACH MAIN CABINET OR ENCLOSURE. GROUNDING SYSTEM MUST YIELD RESULTS BELOW 10 OHMS AND DOCUMENTATION FROM THE ELECTRICAL CONTRACTOR MUST BE PROVIDED TO REDFLEX. NO ADDITIVE IS TO BE PUT IN THE GROUND TO ARTIFICIALLY YIELD THE DESIRED RESULTS.
- PULL ROPE TO BE RUN THROUGH ALL CONDUIT FROM THE REDFLEX ENCLOSURE TO ALL REDFLEX EQUIPMENT. ALL SPARE CONDUCTORS/WIRES SHALL TERMINATE AT THE JUNCTION BOXES, CAMERA ENCLOSURES AND CABINETS. SPARE WIRES SHALL BE TAPED AT THE END, CONTINUOUS IN LENGTH AND IDENTIFIABLE WITH PERMANENT IDENTIFICATION BAND AND TAGGED AS "RTS".
- TERMINATE POLE TO REDFLEX POWER CIRCUIT, SEE CONDUCTOR SCHEDULE FOR DETAILS (HOT AND NEUTRAL).
- INSTALL OPTO-ISOLATOR INSIDE TRAFFIC CABINET TO PROTECT EQUIPMENT. SEE CONDUCTOR SCHEDULE FOR APPROACHES. (NOTE: NOTIFY THE TRAFFIC OPERATIONS DEPARTMENT OF THE CITY 24 HOURS BEFORE CONNECTION).
- CONTRACTOR SHALL TERMINATE ALL POWER CIRCUITS INTO REDFLEX ENCLOSURE FROM POLE MOUNTED CABINET. INSTALL 30 AMP BREAKER INTO EXISTING SERVICE INSTALLATION FOR 120V SUPPLY TO CAMERA ENCLOSURE.
- CONTRACTOR SHALL USE EXISTING CONDUIT WHERE AVAILABLE. NEW CONDUIT TO BE TRENCHED/BORED IN ROADWAY TO MIN. STANDARD COVER DEPTH REQUIRED BY THE CITY (24" MINIMUM).
- VERIFY IF EXISTING SIGNAL HEADS HAVE LED'S INSTALLED. IF NOT, INSTALL RED AND AMBER GELCORE LED'S OF THE TYPE APPROVED BY THE CITY-VERIFY BEFORE INSTALLING. IF NEEDED, ADJUST REDFLEX CAMERA SO IT IS VISIBLE TO THE SIGNAL HEADS.
- REFRESH STRIPING (VIOLATION LINE AND LANES ETC) AS NEEDED AT THE MONITORED APPROACHES.
- PHOTO ENFORCEMENT WARNING SIGNS SHALL BE PLACED PER CITY SPECIFICATIONS PRIOR TO INTERSECTION IN ALL DIRECTIONS AND SHALL NOT BLOCK THE VIEW OF ANY REGULATORY, GUIDE OR WARNING SIGNS. SIGNS TO BE INSTALLED BY CITY ENGINEERING.

GENERAL NOTES

- ALL EXISTING UTILITIES SHOWN WITHIN THE PLANS ARE PROVIDED BY THE BEST AVAILABLE INFORMATION PROVIDED BY COOPERATING UTILITY COMPANIES. NEITHER REDFLEX NOR THE CITY ASSUME RESPONSIBILITY AS TO THE PRECISE LOCATION OR ACCURACY OF SHOWN UTILITIES. THE CONTRACTOR SHALL PROPERLY FIELD VERIFY UTILITY LOCATIONS AND SHALL PROPERLY PROTECT, MAINTAIN AND/OR REPAIR ANY DAMAGE OF ALL KNOWN AND ANY EXPOSED UNKNOWN UTILITIES SHOWN WITHIN THE PLANS. REDFLEX AND THE CITY ASSUME NO LIABILITY RESULTING IN POSSIBLE DEFICIENCIES IN UTILITY LOCATIONS AND NO REMEDIAL OR ADDITIONAL COMPENSATION WILL BE ALLOWED.
- ALL WORK SHALL CONFORM TO ALL NATIONAL BUILDING AND ELECTRICAL CODES EXCEPT WHEN THE STATE D.O.T. AND/OR THE CITY STANDARDS SUPERSEDE.
- ALL SUBSTRUCTURES MUST BE LOCATED PRIOR TO CONSTRUCTION. THE CONTRACTOR SHALL AND MUST NOTIFY ALL UTILITY COMPANIES WITHIN A MINIMUM OF 48 HOURS PRIOR TO START OF WORK. REDFLEX WILL MEET WITH THE CONTRACTOR AND CITY OFFICIALS TO MARK THE EXACT LOCATION OF REDFLEX EQUIPMENT IF NECESSARY PRIOR TO CONSTRUCTION.
- TRAFFIC FLOW SHALL BE MAINTAINED AT ALL TIMES. TEMPORARY SHUTDOWNS OR DISRUPTION MUST BE COORDINATED WITH THE CITY.

Traffic control plans must be reviewed and approved by the City prior to implementation.

conduit spec Sched. 40/60

Should City Forces Out this? Public Works?

Contractor Responsible for calling 811 48hrs prior to beginning work.

CONDUCTORS		CONDUITS																TERMINATION	POLES						
SOURCE	AWG#	1	2	3	4	5	6	7	8	9	10	11	12	13	14	15	16		M1	M2					
POLE M1 PMC (COMMS)	CAT5E	SHIELD 4 PAIR	1	1	1	1	1	1										POLE M2 PMC	1	1					
TRAFFIC RED PHASE (5-7 MULTI-CABLE)	#14	RED (+) ORANGE (+)	1	1	1	1	1	1	2									REDFLEX PMC'S	1	1					
CITY/STATE POWER SOURCE (120V)	#8	BLACK (+) WHITE (+)	2	2	2				2									POLE M1	2						
POLE M1 PMC (POWER)	#8	BLACK (+) WHITE (+)	2	2	2	2	2	2										POLE M2	2	2					
STRANDED BOND	#8	GREEN	1					1										ALL REDFLEX EQUIPMENT	1	1					
TOTAL NEW CABLES			7	6	6	4	4	5	4									NOTE: 2(2") CONDUITS MAY BE SUBSTITUTED FOR THE 4"	7	5					
CONDUIT SIZE/POLE RISER (INCHES)			2	T	T	T	T	2	T										*	*	*	*	*	*	*
LENGTH (~ FEET)			21	95	72	109	124	3	9										REFER TO THE POLE SCHEDULE FOR ADDITIONAL POLE INFORMATION						
NEW/EXISTING			N	E	E	E	E	N	E																

\* = CONDUCTORS RUN WITHIN POLE | A = AERIAL RUN | T = TRAFFIC SIGNAL CONDUIT

LEGEND		POLE SCHEDULE				RELAY SCHEDULE			
	REDFLEX HALO 2.0 ENCLOSURE	NO.	TYPE	HEIGHT	CONDITION	NB	EB	SB	WB
	REDFLEX PULL/JUNCTION BOX	M1	REDFLEX, TYPE 1	10'	NEW	-	-	2	2
	EXISTING PULL/JUNCTION BOX	M2	REDFLEX, TYPE 1	10'	NEW	-	-	2	2
	TRAFFIC CONTROL CABINET	ABBREVIATIONS							
	POWER CABINET	CAT5 = CATEGORY FIVE CABLE							
	TELECOMMUNICATIONS	DLC = DETECTOR LOOP CABLE (SHIELDED)							
	SIGNAL HEAD	TSP = TWISTED SHIELDED PAIR							
	LUMINAIRE	LED = LIGHT EMITTING DIODE							
		R/W = RIGHT OF WAY							
		PMC = POLE MOUNTED CABINET							
		STP = STANDARD TERMINATION PANEL							
		RTS = REDFLEX TRAFFIC SYSTEMS							

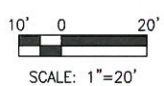
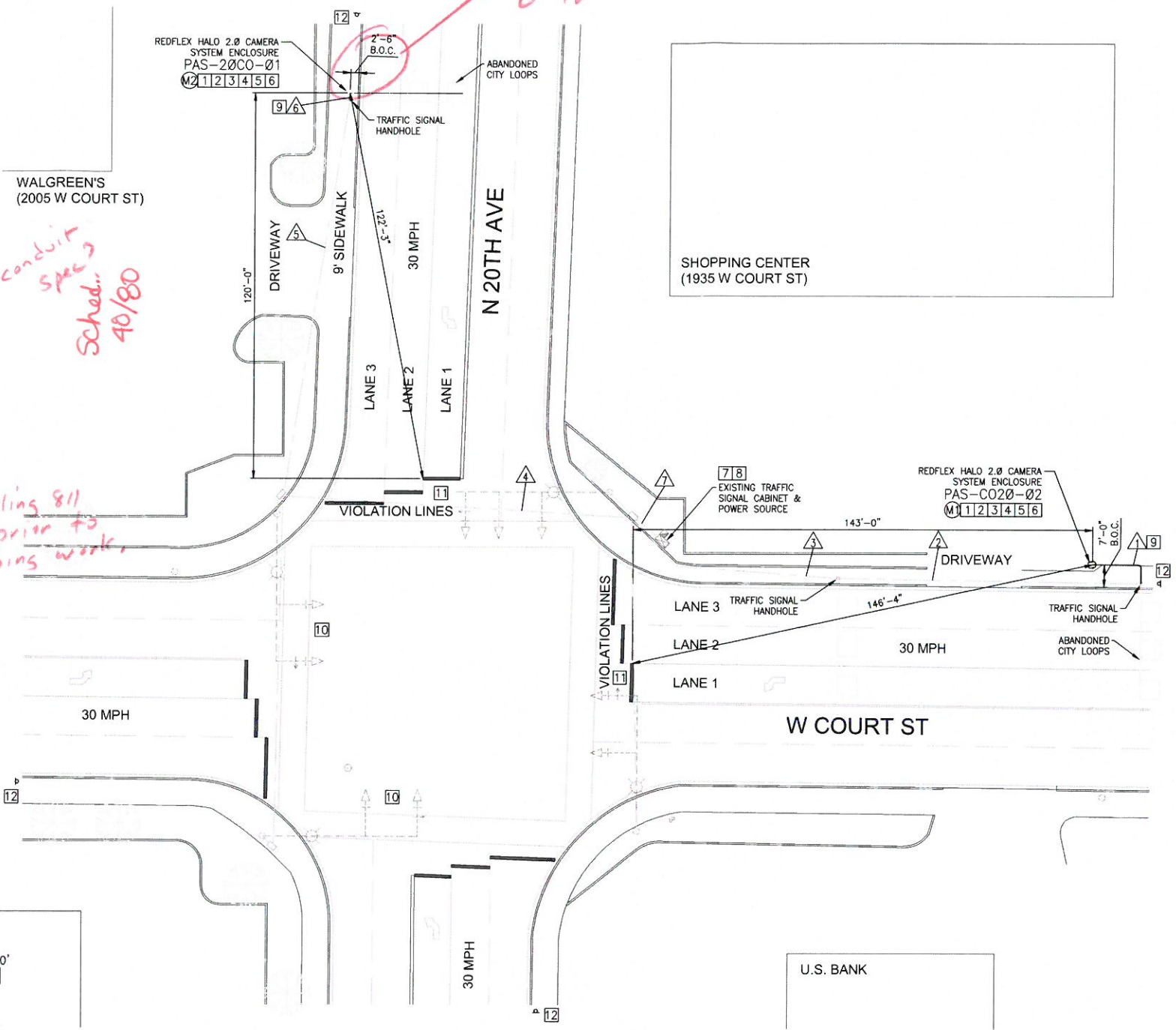
**Redflex**  
5651 W. TALAVI BLVD., #200 GLENDALE, AZ 85036  
WEBSITE: REDFLEX.COM | PHONE: 623-207-2000

NO.	DATE (Y/M/D)	INITIAL	REVISION DESCRIPTION
01	10/01/10	JL	INITIAL RELEASE

DRAWN BY (REDFLEX): J.LORD	DESIGNED BY (REDFLEX): C.RENZI
APPROVED BY:	
PUBLIC WORKS DIRECTOR/CITY ENGINEER & DATE	
RECOMMENDED BY:	
DEPUTY CITY ENGINEER/DEVELOPMENT SERVICES & DATE	

REDLIGHT PHOTO ENFORCEMENT  
PASCO, WA  
N 20TH AVE & W COURT ST

RTS DRAWING NO. PAS -103  
SIZE SHEET NO. D - OF -



CONSTRUCTION NOTES

- 1 THIS IS A POLE MOUNTED CABINET SYSTEM. ALL CONDUCTOR CONNECTIONS TO BE MADE WITHIN THE POLE MOUNTED CABINET FOR EACH APPROACH. POLE MOUNTED CABINET TO BE INSTALLED AWAY FROM PEDESTRIAN TRAFFIC AND AT A MINIMUM HEIGHT FROM GRADE TO BOTTOM OF POLE MOUNTED CABINET SHALL BE 7 FEET IF LOCATED IN A SIDEWALK AND/OR NEAR A DRIVEWAY/EXIT, TO AVOID ANY LINE OF SIGHT ISSUES FOR MOTORISTS. SEE POLE DETAILS.
- 2 INSTALL FOUNDATION, POLE AND GROUND FOR REDFLEX EQUIPMENT. SEE DRAWING FOR LOCATION. SEE POLE DETAIL.
- 3 INSTALL CAMERA ENCLOSURE ON REDFLEX POLE; AIM AT MONITORED APPROACHES.
- 4 CONNECT POLE TO STRANDED BOND GROUND AND GROUNDING ROD IN POLE FOUNDATION AND TO SYSTEM GROUND BONDED BACK AT THE REDFLEX ENCLOSURE. CONTRACTOR SHALL PERFORM THREE-POINT GROUND TEST AT EACH MAIN CABINET OR ENCLOSURE. GROUNDING SYSTEM MUST YIELD RESULTS BELOW 10 OHMS AND DOCUMENTATION FROM THE ELECTRICAL CONTRACTOR MUST BE PROVIDED TO REDFLEX. NO ADDITIVE IS TO BE PUT IN THE GROUND TO ARTIFICIALLY YIELD THE DESIRED RESULTS.
- 5 PULL ROPE TO BE RUN THROUGH ALL CONDUIT FROM THE REDFLEX ENCLOSURE TO ALL REDFLEX EQUIPMENT. ALL SPARE CONDUCTORS/WIRES SHALL TERMINATE AT THE JUNCTION BOXES, CAMERA ENCLOSURES AND CABINETS. SPARE WIRES SHALL BE TAPED AT THE END, CONTINUOUS IN LENGTH AND IDENTIFIABLE WITH PERMANENT IDENTIFICATION BAND AND TAGGED AS "RTS".
- 6 TERMINATE POLE TO REDFLEX POWER CIRCUIT, SEE CONDUCTOR SCHEDULE FOR DETAILS (HOT AND NEUTRAL).
- 7 INSTALL OPTO-ISOLATOR INSIDE TRAFFIC CABINET TO PROTECT EQUIPMENT. SEE CONDUCTOR SCHEDULE FOR APPROACHES. (NOTE: NOTIFY THE TRAFFIC OPERATIONS DEPARTMENT OF THE CITY 24 HOURS BEFORE CONNECTION).
- 8 CONTRACTOR SHALL TERMINATE ALL POWER CIRCUITS INTO REDFLEX ENCLOSURE FROM POLE MOUNTED CABINET. INSTALL 30 AMP BREAKER INTO EXISTING SERVICE INSTALLATION FOR 120V SUPPLY TO CAMERA ENCLOSURE.
- 9 CONTRACTOR SHALL USE EXISTING CONDUIT WHERE AVAILABLE. NEW CONDUIT TO BE TRENCHED/BORED IN ROADWAY TO MIN. STANDARD COVER DEPTH REQUIRED BY THE CITY (24" MINIMUM).
- 10 EXISTING SIGNAL HEADS HAVE LED'S INSTALLED. IF NEEDED, ADJUST REDFLEX CAMERA SO IT IS VISIBLE TO THE SIGNAL HEADS.
- 11 REFRESH STRIPING (VIOLATION LINE AND LANES ETC) AS NEEDED AT THE MONITORED APPROACHES.
- 12 PHOTO ENFORCEMENT WARNING SIGNS SHALL BE PLACED PER CITY SPECIFICATIONS PRIOR TO INTERSECTION IN ALL DIRECTIONS AND SHALL NOT BLOCK THE VIEW OF ANY REGULATORY, GUIDE OR WARNING SIGNS. SIGNS TO BE INSTALLED BY CITY ENGINEERING.

GENERAL NOTES

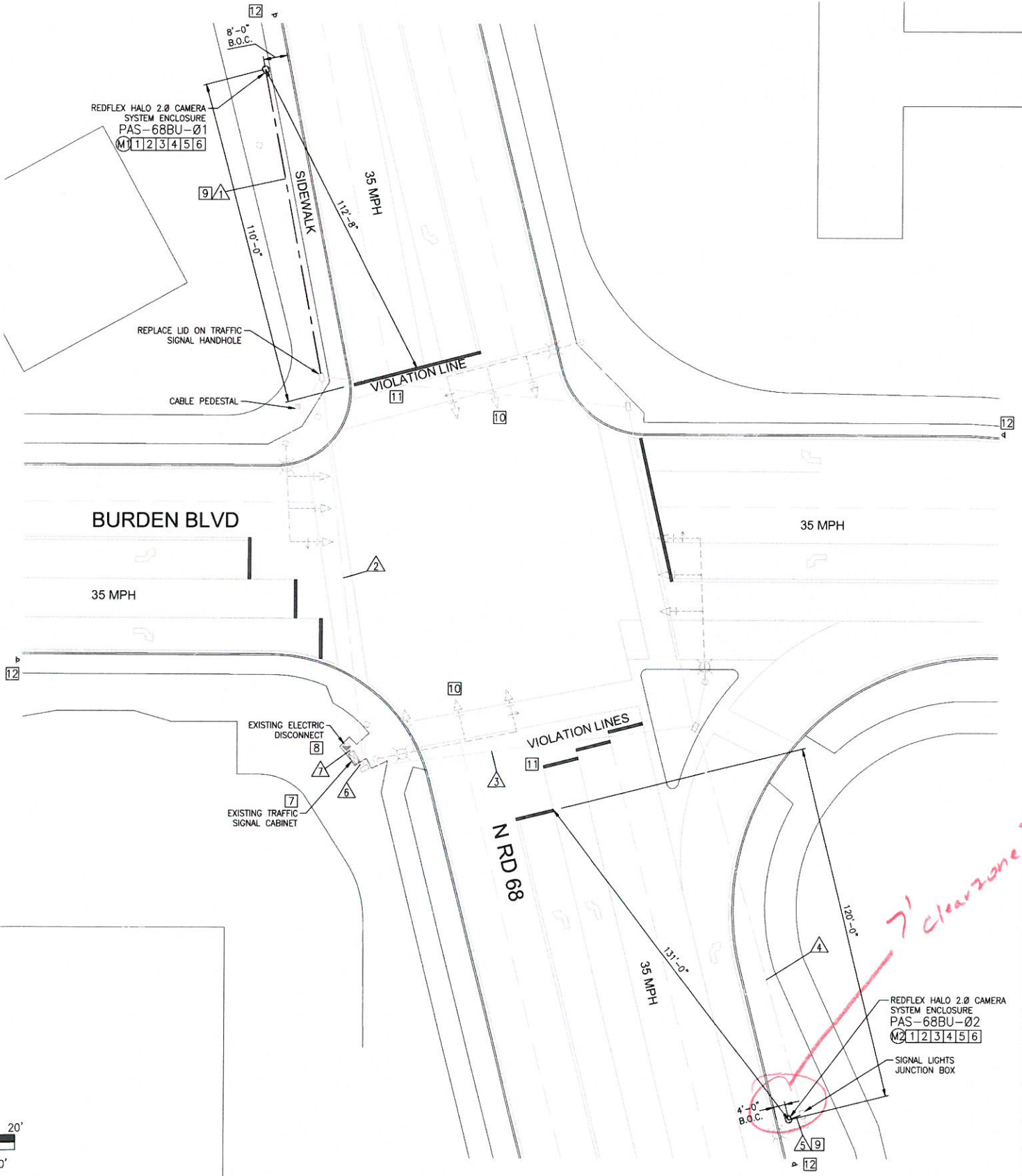
1. ALL EXISTING UTILITIES SHOWN WITHIN THE PLANS ARE PROVIDED BY THE BEST AVAILABLE INFORMATION PROVIDED BY COOPERATING UTILITY COMPANIES. NEITHER REDFLEX NOR THE CITY ASSUME RESPONSIBILITY AS TO THE PRECISE LOCATION OR ACCURACY OF SHOWN UTILITIES. THE CONTRACTOR SHALL PROPERLY FIELD VERIFY UTILITY LOCATIONS AND SHALL PROPERLY PROTECT, MAINTAIN AND/OR REPAIR ANY DAMAGE OF ALL KNOWN AND ANY EXPOSED UNKNOWN UTILITIES SHOWN WITHIN THE PLANS. REDFLEX AND THE CITY ASSUME NO LIABILITY RESULTING IN POSSIBLE DEFICIENCIES IN UTILITY LOCATIONS AND NO REMEDIAL OR ADDITIONAL COMPENSATION WILL BE ALLOWED.
2. ALL WORK SHALL CONFORM TO ALL NATIONAL BUILDING AND ELECTRICAL CODES EXCEPT WHEN THE STATE D.O.T. AND/OR THE CITY STANDARDS SUPERSEDE.
3. ALL SUBSTRUCTURES MUST BE LOCATED PRIOR TO CONSTRUCTION. THE CONTRACTOR SHALL AND MUST NOTIFY ALL UTILITY COMPANIES WITHIN A MINIMUM OF 48 HOURS PRIOR TO START OF WORK. REDFLEX WILL MEET WITH THE CONTRACTOR AND CITY OFFICIALS TO MARK THE EXACT LOCATION OF REDFLEX EQUIPMENT IF NECESSARY PRIOR TO CONSTRUCTION.
4. TRAFFIC FLOW SHALL BE MAINTAINED AT ALL TIMES. TEMPORARY SHUTDOWNS OR DISRUPTION MUST BE COORDINATED WITH THE CITY.

CONDUCTORS		CONDUITS																TERMINATION	POLES			
SOURCE	AWG#	1	2	3	4	5	6	7	8	9	10	11	12	13	14	15	16		M1	M2		
POLE M1 PMC (COMMS)	CATSE	SHIELD & PAIR	1	1	1	1	1											POLE M2 PMC	1	1		
TRAFFIC RED PHASE (5-7 MULTI-CABLE)	#14	RED (+) ORANGE (+)	1	1	1	1	1	2										REDFLEX PMC'S	1	1		
CITY/STATE POWER SOURCE (120V)	#8	BLACK (+) BLUE (-)	2	2				2	2									POLE M1	2			
POLE M1 PMC (POWER)	#8	BLACK (+) BLUE (-)	2	2	2	2	2											POLE M2	2	2		
STRANDED BOND	#8	GREEN	1				1											ALL REDFLEX EQUIPMENT	1	1		
TOTAL NEW CABLES		7	6	4	4	5	4	2										NOTE: 2(2") CONDUITS MAY BE SUBSTITUTED FOR THE 4"	7	5		
CONDUIT SIZE/POLE RISER (INCHES)		2	T	T	T	2	T	T											*	*	*	*
LENGTH (~ FEET)		104	130	110	134	5	3	2														
NEW/EXISTING		N	E	E	E	N	E	E														

\* = CONDUCTORS RUN WITHIN POLE | A = AERIAL RUN | T = TRAFFIC SIGNAL CONDUIT

LEGEND		POLE SCHEDULE				RELAY SCHEDULE	
		NO.	TYPE	HEIGHT	CONDITION		
	REDFLEX HALO 2.0 ENCLOSURE	M1	REDFLEX, TYPE 1	10'	NEW	NB	2
	REDFLEX PULL/JUNCTION BOX	M2	REDFLEX, TYPE 1	10'	NEW	EB	-
ABBREVIATIONS							
CAT5	= CATEGORY FIVE CABLE	STP	= STANDARD TERMINATION PANEL	RTS	= REDFLEX TRAFFIC SYSTEMS	WB	-
DLC	= DETECTOR LOOP CABLE (SHIELDED)						
TSP	= TWISTED SHIELDED PAIR						
LED	= LIGHT EMITTING DIODE						
R/W	= RIGHT OF WAY						
PMC	= POLE MOUNTED CABINET						
STP	= STANDARD TERMINATION PANEL						
RTS	= REDFLEX TRAFFIC SYSTEMS						

10' 0 20'  
SCALE: 1"=20'



**Redflex**  
5651 W. TALAM BLVD., #200 GLENDALE, AZ 85036  
WEBSITE: REDFLEX.COM | PHONE: 623-207-2000

NO.	DATE (YYMMDD)	INITIAL	REVISION DESCRIPTION
01	100116	JL	INITIAL RELEASE

DRAWN BY (REDFLEX): J.LORD	DESIGNED BY (REDFLEX): C.RENZI
APPROVED BY:	
PUBLIC WORKS DIRECTOR/CITY ENGINEER & DATE	
RECOMMENDED BY:	
DEPUTY CITY ENGINEER/DEVELOPMENT SERVICES & DATE	

REDLIGHT PHOTO ENFORCEMENT  
PASCO, WA  
N RD 68 & BURDEN BLVD

RTS DRAWING NO.	PAS -104
SIZE	SHEET NO.
D	- OF -